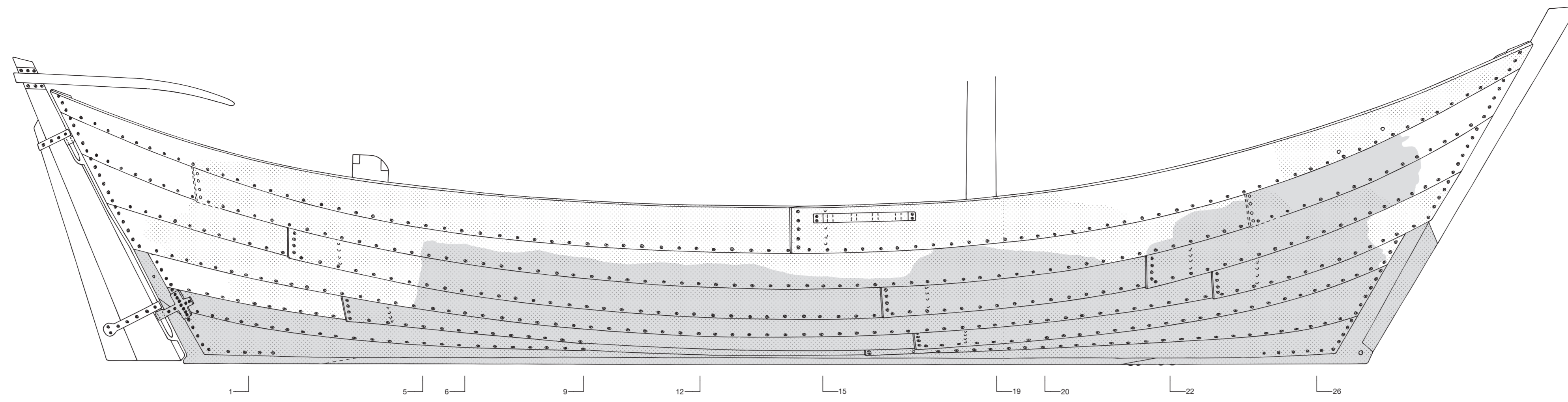
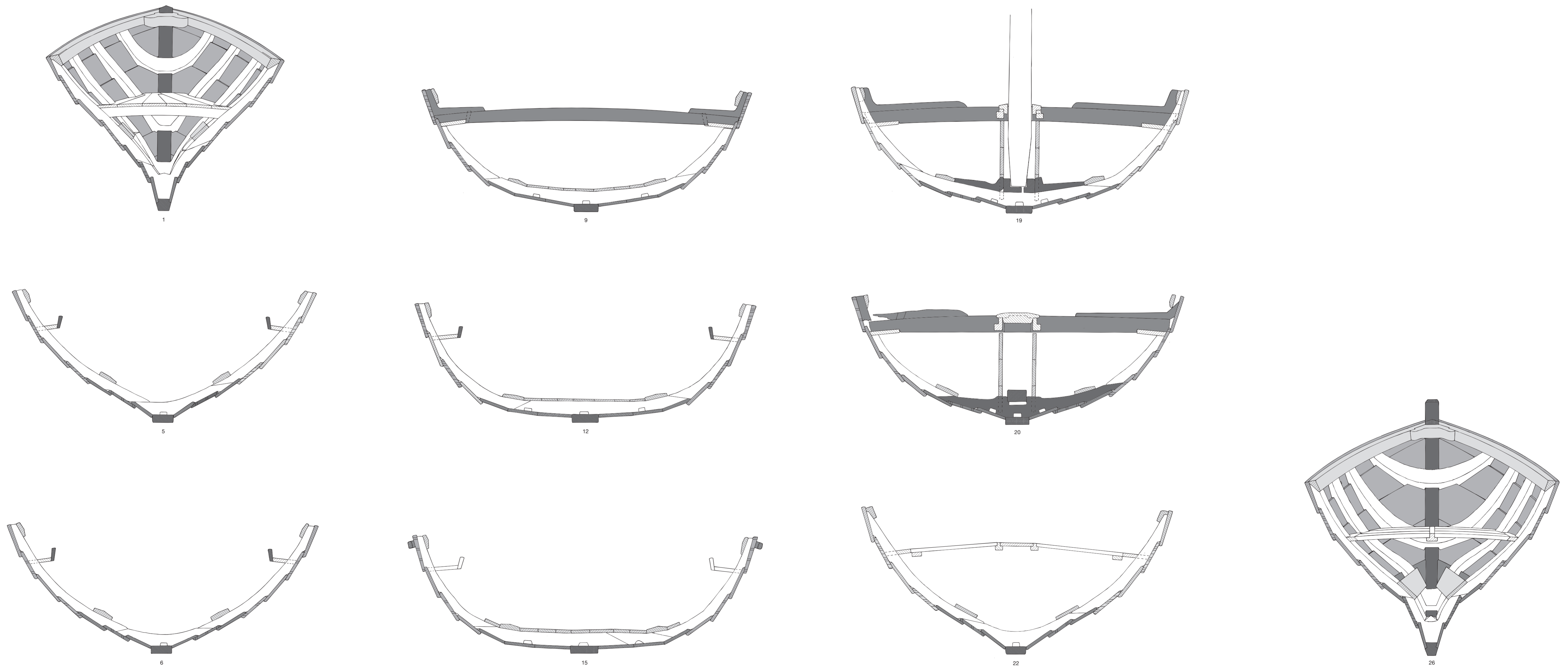


A. Exterior of the starboard side



B. Cross-sections



Legend to A

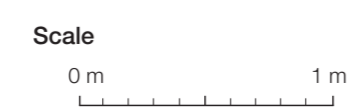
- Recovered timbers of the port shell
- Recovered timbers of the starboard shell
- Frame number

Legend to B

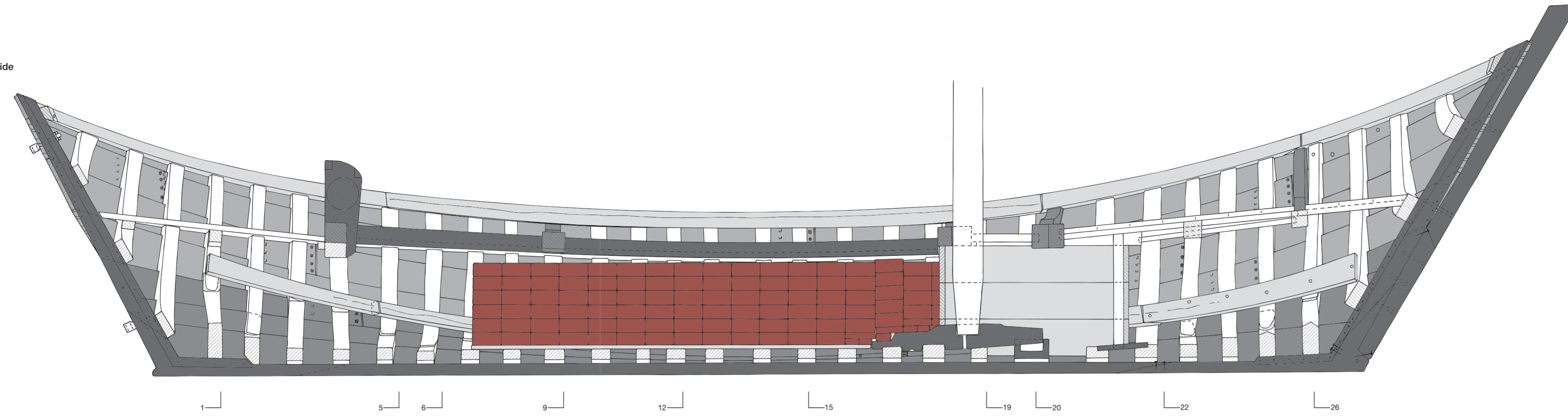
- Keel plank, stem- and stem hooks, stem- and stemposts, false stem, mastsporen, riders, coaming
- Bottom planking cross connections, (deck) knees, channels
- Planks of the sides
- Ceiling boards, inwale, construction around the mast
- Frames, decks, gangways, deck beams
- Cross-cut wood
- Frame number

Reconstruction drawings

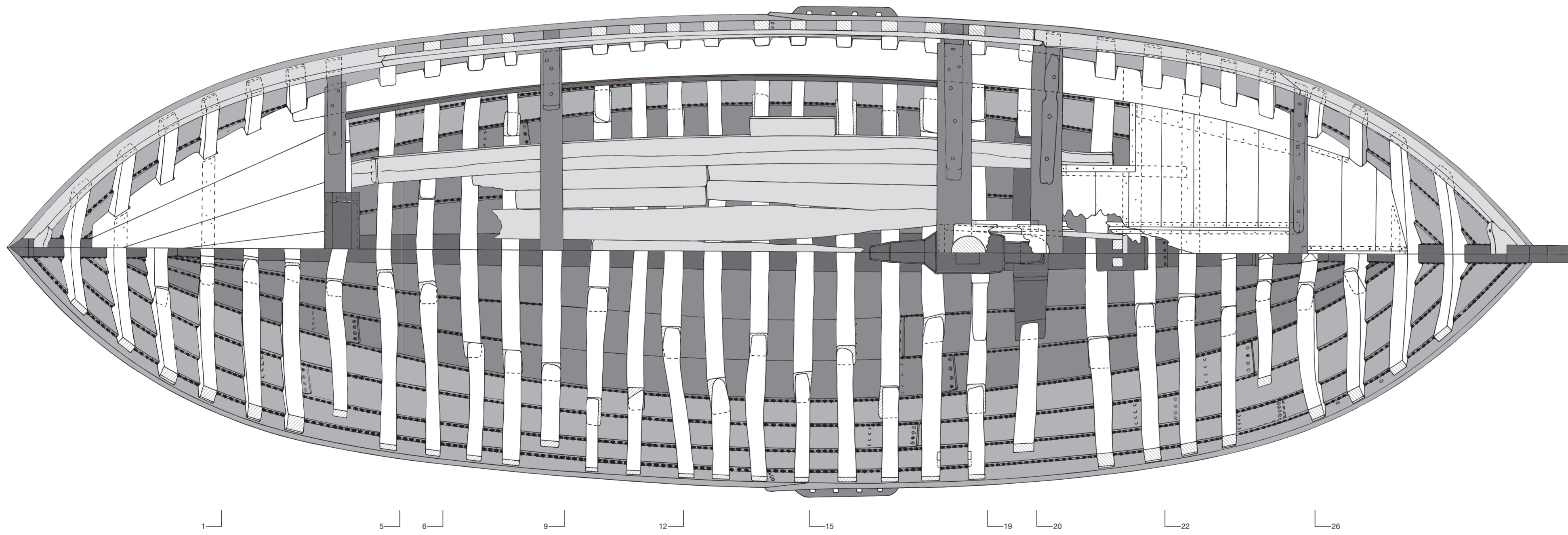
- A. Exterior of the starboard side, combining the recovered timbers of the starboard and port sides.
- B. Cross-sections.



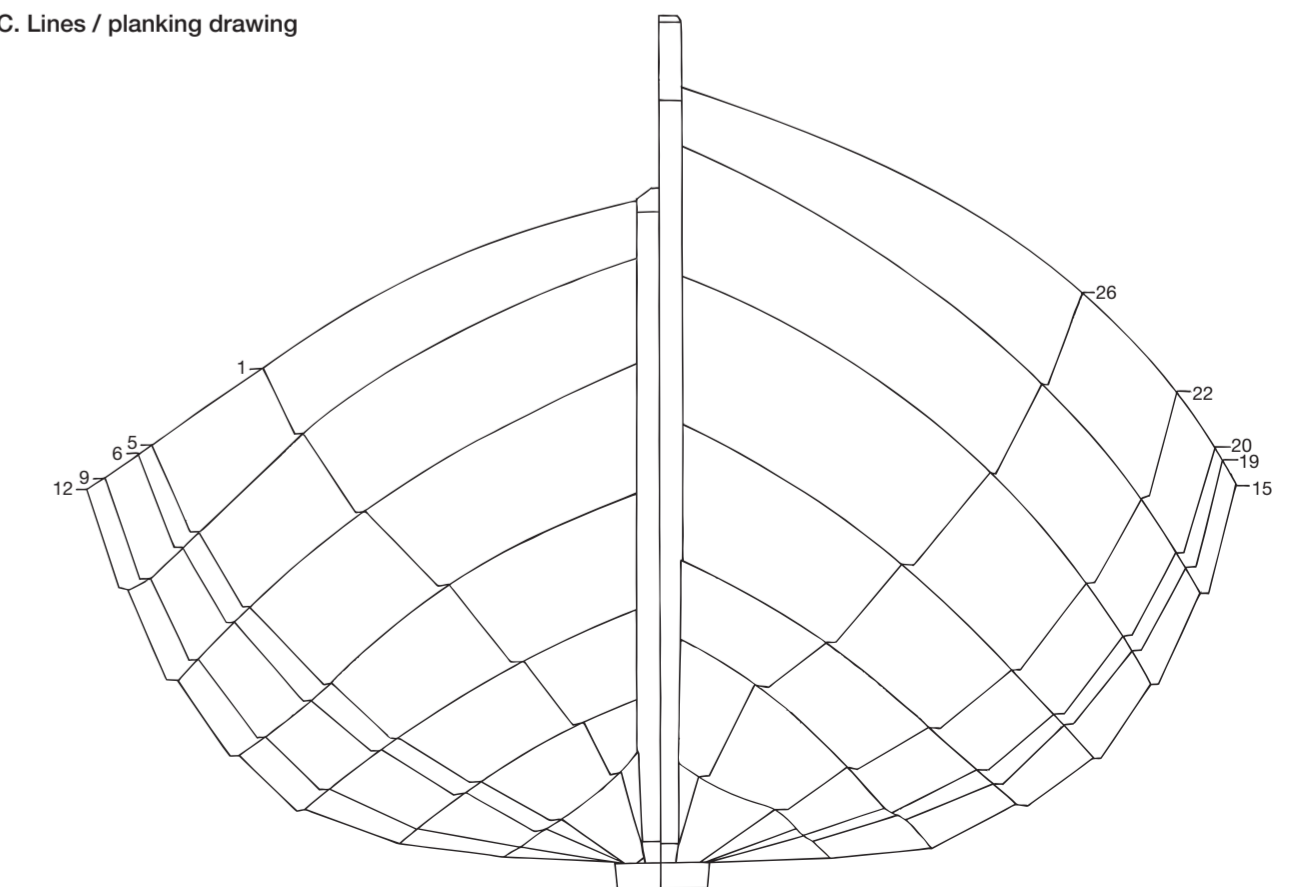
A. Interior of the port side



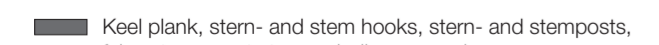


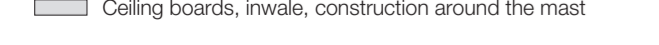
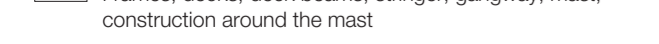



B. Top view



C. Lines / planking drawing



Legend

-  Keel plank, stern- and stem hooks, stern- and stemposts, false stem, mast steps, windlass, coaming
-  Bottom planking, (deck) knees, channels, cross connections
-  Planking of the sides
-  Ceiling boards, inwale, construction around the mast
-  Frames, decks, deck beams, stringer, gangway, mast, construction around the mast
-  Cargo of large bricks
-  Cross-cut wood
-  Frame number

Reconstruction drawings

- A. Interior of the port side with the cargo of large bricks in the hold.
- B. Top view with deck plan and the load-bed (port) and the planking/frame plan (starboard).
- C. Lines/planking drawing of the top edges of the shell strakes. On the right, the interior of the forebody; on the left, that of the afterbody; and cross-sections at frames 1, 5, 6, 9, 12, 15, 19, 20, 22 and 26.

Scale
0 m 1 m